

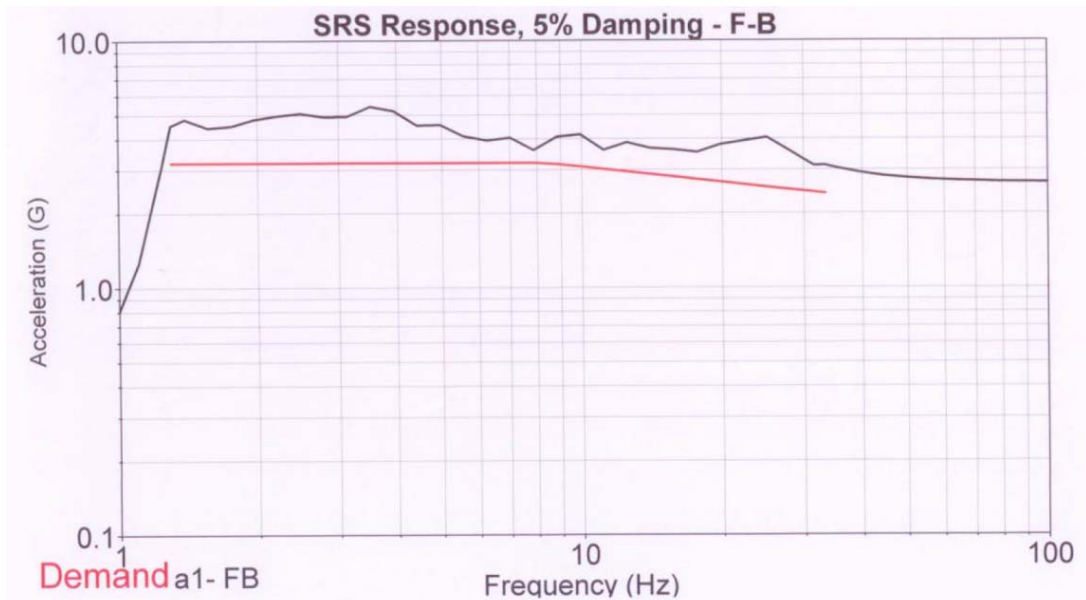
# TECHNIBUS

## SPECIAL SEISMIC CERTIFICATE OF COMPLIANCE

Product Line: Technibus 600V, 5kV, and 15kV Metal Enclosed Bus Duct

**Qualified to UBC-1997, IBC-2009, CBC 2010 (OSP-0222-10), ASCE7-10, and IEEE993-2005**

**$S_{DS} = 2.0g$ ,  $S_S = 3.0g$ , Site Class D,  $I_p = 1.5$ , for  $z/h = 1$  in accordance with ICC-ES AC156**



**Qualified by Shake-Table Testing at Clark Laboratories, Inc. Jefferson Hills, PA, June 2011**

(WEGAI Seismic Report No. 1245-01)

(Clark Test Report No. 9738)

See WEGAI report No. 1245-01 for a list of certified models and seismic installation requirements.

### **Certification:**

This document certifies the above mentioned metal enclosed bus duct manufactured by Technibus meets the requirements of UBC-1997/IBC-2009/CBC-2010/ASCE7-10 with an Importance Factor of 1.5 and the requirements of IEEE-693-2005 High Level.



Seismic certification and analytical work performed by W.E. Gundy & Associates, Inc. (www.wegai.com). Travis E. Soppe, Registered Professional Engineer, California

